



Nuthurst Cricket Club (1830-present)

Enhancing community life through broad participation in the Parish Cricket Club

Parish Council Presentation – 4 September 2019

REQUEST FOR SUPPORT IMPROVEMENTS TO CRICKET SQUARE PROTECTION

Jonny Willis, Deputy Chairman, player & parish resident

www.nuthurstcricketclub.co.uk

Facebook - @nuthurstcc

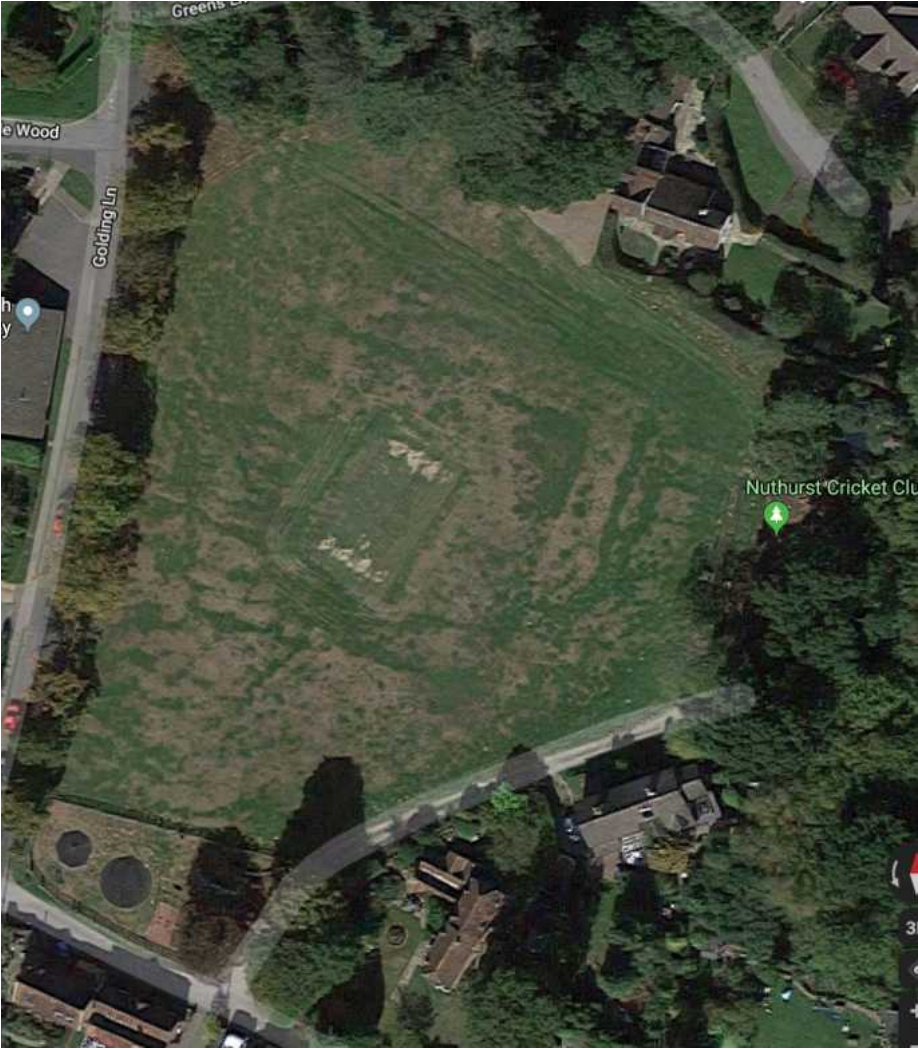
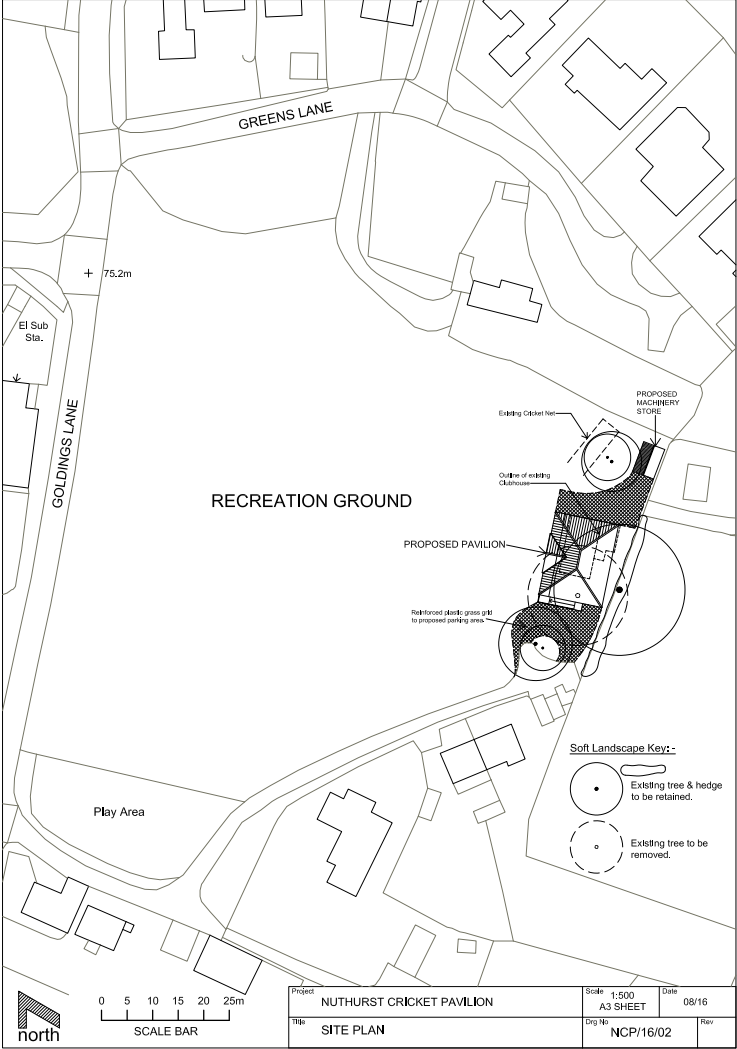
What we are asking

- We wish permission to slightly increase the size of the protected playing area of the cricket square
 - Old maximum dimensions – 17.6 metres wide x 21.9 metres long
 - New proposed dimensions - 20.0 metres wide x 25.4 metres long
 - Increase in width – 2.4 metres, equivalent to [1.2 metres per side](#)
 - Increase in length – 3.5 metres, equivalent to [1.75 metres per side](#)
- There is no cost implication to the Parish Council
 - NCC will bear the cost of inserting posts (below the surface) and the supply of the rope
 - The materials will be:
 - Round white plastic post
 - Nylon braided rope
 - Ground screw to retain the post when in situ
- We want to improve the appearance of these permanent protection and cannot do so without replacing the current eroded blocks
 - We would like to execute the works as soon as possible
 - Licence provides for protection to remain year round

Background

- Cricket squares are roped off for the protection of the playing surface
 - The quality of the playing surface, its preparation and maintenance are a vital component of the Game
 - Damage can occur through animal scrapings or non-cricket footwear
 - Damage leads to:
 - Poor quality of contest between bat and ball
 - Reduced safety of the Players
 - Reduced appetite to play at that ground
- Current protection at the Common is inadequate
 - Unsightly – eroded concrete blocks result in leaning poles
 - Poles are ugly and insufficient in number to support perimeter rope
 - Border of roped area rests precisely on the pitch edge
- We have 6 wickets on our square of which 5 are used regularly, 1 for training

The site



Current square rope perimeter

Cottage (top) side

Ugly poles



Golding Lane side

No sound fixture in ground block



Pine tree end

No sound fixture in ground block



Playground end



Proposed new square rope perimeter

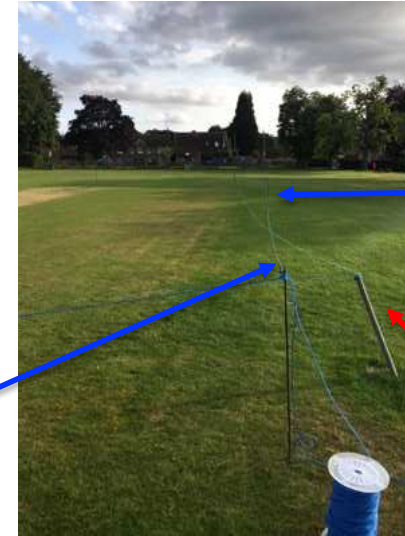
Cottage (top) side

New perimeter line



Golding Lane side

New perimeter line



New perimeter line

Old line

Pine tree end

New perimeter line



Playground end

New perimeter line



Securing the posts - Blooma Ground Screws

- No use of concrete, just muscle!
- Screwed to below ground level so there is no trip or health hazard



Why are we asking this

- With our new pavilion in situ, we believe the square protection deserves an upgrade to improve the overall aesthetic of the Common and presentation of cricket facilities
- Given the eroded and aged concrete blocks, the project will require new ground fixings
- Given the requirement for new ground fixings, it is timely to address the request for an increase in margin
- The increase in margin will allow
 - Reduced outfield machinery compaction at each wicket end and on the outside wickets
 - Improve repair grass repair results at each bowling end
 - Deliver a better visual balance for the playing surface in having a small margin around the wickets

... and finally....

Unlike our current rope perimeter...

... we will make sure this will be square!